

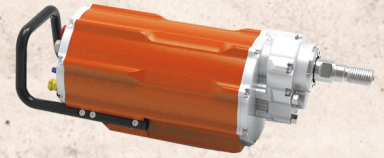
# ALL - IN - ONE



Power Pack



Single-phase Motor  
3,6 kW



3-phase Motor  
11 kW



Autofeed System



Radio Remote  
Control

ONE CABLE ONLY

CM-10AF  
CORE DRILL  
MOTOR WITH  
CHANGEABLE  
GEARBOXES  
SG30/SG60

DOUBLE THE DRILLING POWER

**CUTTRONIX**<sup>®</sup>  
BY PROFESSIONALS. FOR PROFESSIONALS.

CUTTRONIX<sup>®</sup>  
is the trademark of  
 **KASKOD**  
MTRONIX



# ALL - IN - ONE



Single-phase Motor  
3,6 Kw



3-phase Motor  
11Kw



Power Pack



ONE CABLE ONLY



CM-10  
CORE DRILL  
MOTOR WITH  
CHANGEABLE  
GEARBOXES  
SG30/SG60

**DOUBLE THE DRILLING POWER**

**CUTTRONIX**<sup>®</sup>  
BY PROFESSIONALS. FOR PROFESSIONALS.

CUTTRONIX<sup>®</sup>  
is the trademark of  
 **KASKOD**  
MTRONIX



## Cuttronix® Concrete Core Drill Motors

CM-10, CM-10AF, High power, high cycle core drilling motors with changeable gearboxes SG30, SG60 offer high performance, efficiency, productivity and reliability. The motors are based on KASKOD-MTRONIX ISRCdrive™ Technology and each product combines at least two core drill motors with single phase and 3-phase input power. There is no external inverter box needed! To connect to single phase or 3-phase power, only one adapter cable is required.

CM-10AF motor versions additionally include integrated autofeed and radio-remote control systems.

The CM-10AF motor versions can be supplied with three different interchangeable spindle gearbox units and pulley modules, so that the same motor could power a wire saw system.

### Key features of Core drill motors CM-10, CM-10AF with changeable gearboxes SG30, SG60:



CM-10S3 drilling system

System Type	CM-10S3, CM-10AFS3		CM-10S6, CM-10AFS6	
Spindle Gearbox Type	SG30		SG60	
Power Type	1-phase 230 Volt	3-phase 400 Volt	1-phase 230 Volt	3-phase 400 Volt
Input power (kW)	3.6	11	3.6	11
Rated output power (kW)	3.0	10	3.0	10
Input voltage (V)	230 - 250	400 - 480	230 - 250	400 - 480
Input frequency (Hz)	50 - 60			
Spindle (rpm)	40 - 800	40 - 1000	20 - 400	20 - 500
Core bit diameter (mm/inches)	40-420/1.5-16 when motor on carriage 420-860/16-34 with one spacer block		40-610/1.5-24 when motor on carriage 610-1010/16-41 with one spacer block	
Spindle torque (Nm)	300		600	
Weight (kg)	21.5/25 (ver.AF)		27/29 (ver.AF)	
Dimensions (mm)	576 x 176 x 248		612 x 176 x 388	
Antilock core bit coupling	+		+	
Autofeed	For CM-10AF version only			
Radio-remote control	For CM-10AF version only			
Protection class	IP66			
Operating temperature range °C	+5 ÷ +50 °C			
Storage temperature range °C	-40 ÷ +85 °C			



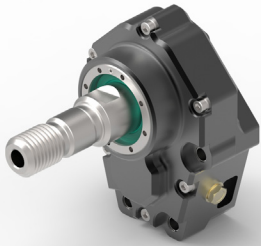
CM-10AFS3 drilling system



CM-10 drive unit manual feed



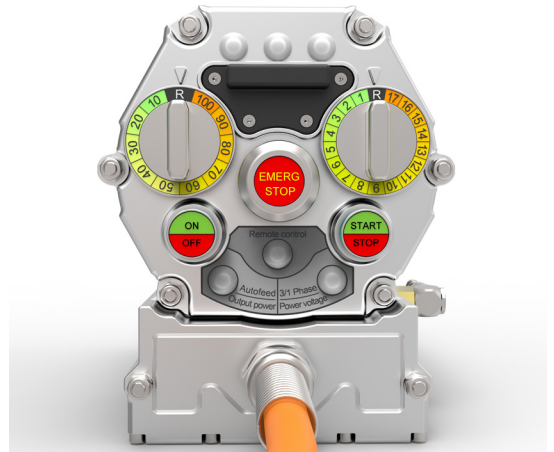
CM-10AF drive unit automatic feed



SG30 (300Nm)



SG60 (600Nm)



CM-10 control panel

- **Motors** - Long life and reliability are achieved by utilizing a rigid design and the best possible quality of materials. The motors are completely encapsulated with thermally conductive motor compound for good cooling, mechanical strength and moisture resistance.
- **High efficiency** - over a wide speed range.
- **Very low maintenance** - due to use of brushless motors without windings or magnets in the rotor and extremely rugged and simple construction.
- **Motor Protection** - digital motor control system provides protection against overload, overheating, and overvoltage.
- **Durable planetary gear with changeable spindle gearboxes (SG30 or SG60)** - ease of maintenance.
- **Reliable slip clutch** - gearbox damage protection
- **Wide input voltage range** - the drill motor accepts a wide voltage range:
  - Option1: - Europe:** single phase 230V, three phase 400V.
  - Option2: - USA:** split phase 240V, three phase 200-240V, 480V.
  - Option3: - USA, Japan:** single phase 110V, split phase 240V, three phase 200-240V.
- **Power Line monitor:** - indicates type of input voltage, voltage level and a missing phase.
- **Output Power Limit Wheel:** - wide range control of output power to prevent damage of core drill bits of smaller diameter.
- **Electronic system resistant to voltage surges** - impervious to frequency and voltage fluctuations.
- **Mechanical gear + 17 electronic gears and Reverse** - due to torque motor with a single-speed reduction gearbox, accepts drill bit diameter of up to 800 mm (with SG30 gearbox) and 1000 mm (with SG60 gearbox).
- **Antilock coupling for drill bit** - motor can be supplied with different spindle threads or with an antilock coupling.
- **Bright color LEDs** - for motor load and input voltage levels indication.
- **Very durable buttons and switches** - made of metal, without mechanical



- dirt- or dust-sensitive contacts and switches.
- **Built-in compact EMC-filter** - ensures very low electro-magnetic emission levels.
- **Service alert** - Integrated real time clock and hour counter which informs the operator about service time.
- **Protection class IP66** - protected against strong jets of water.
- **Durable metal case** - made of extruded aluminum
- **Very rigid drill stand with extreme stability** - can handle small and large drill bits.

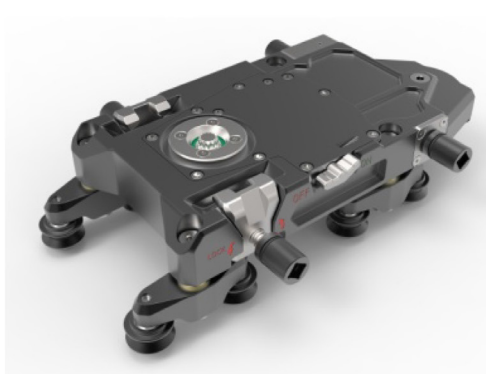


## Cuttronix® Universal Drill Rig (UDR)

- Lightweight adjustable-angle stand for manual and automatic drilling and wire sawing applications.
- Extreme stability: robust and rigid, for reliable professional use.
- Made with the highest quality materials with the most advanced manufacturing technology.
- Quick release motor mount, for easy installation.
- Removable wheels for easy mobility and transportation
- Stackable column length, 1100 mm and 1980 mm sections.
- Base plate: 220x330 mm.
- Stable threaded clumped connection between column and base plate.
- 4 Leveling screws on base plate.
- 3-spoke stainless steel hand crank (can be used on right or left side).
- Column weight: 7,2 kg/m.
- CR-M Motor carriage, manual feed, reduction 4,63:1 - 6,2 kg.
- 4 adjustable guide carriages with 8 rollers for precise and low-vibration drilling.



CR-M Carriage



CR-AF Carriage



Spacer Block



UDR110-2  
assembled of two  
1100mm columns



UDR198  
1980 mm  
column



UDR110  
1100mm column



UDR110-CR-M  
manual feed rig  
assembly